

## England Airpark Heavy Industrial Site-E1

1611 Arnold Drive  
Alexandria, LA 71303

### Property Overview

Parish: Rapides  
Coordinates: -92.528229, 31.341615



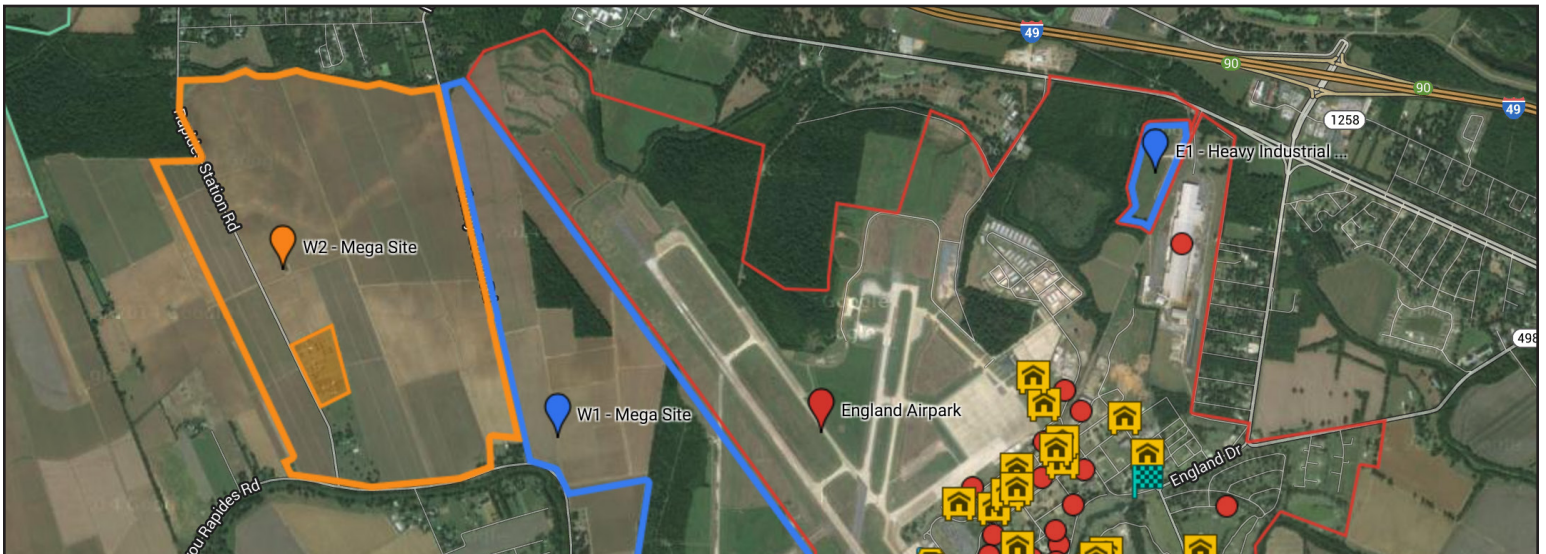
## More Information Online



<http://www.englishairpark.org/sites/england-airpark-heavy-industrial-site-e1>

### QR Code

Scan this image with your mobile device:





## Features

**Available Acreage:** 35  
**Total Acreage:** 35  
**Sale Price:** 45,000 per acre  
**Lease Price:** negotiable  
**Subdividable:** Yes  
**Property Type:** Industrial  
**General Terrain:** flat  
**Within City Limits:** No  
**Industrial Park:** Yes

## Transportation

### Interstates

Primary: 1-49 Distance (mi) 0.5  
Secondary: 1-10 Distance (mi) 76

### Highways

Primary: LA-1 Distance (mi) 0.3  
Secondary: LA-498 Distance (mi) 0.4

### Airports

Primary: Alexandria International (AEX)  
Distance (mi): 1.4  
Services: Commercial, Freight, Charter

Secondary: Lafayette Regional (LFT)  
Distance (mi) 84.5  
Services Commercial, Freight, Charter

## Contact Information



**David Broussard, Jr.**  
Airpark Development Manager  
**Phone:** 318-427-6407  
**Email:** DBroussard@englandairpark.org

## Transportation

### Railroad

Primary: Union Pacific Railroad Distance (mi) 0.3  
Rail Spur: Yes  
Secondary: Kansas City Southern (KCS)  
Distance (mi) 1.9  
Rail Spur: No

### Ports/Navigable Water

Primary: Port of Alexandria Distance (mi) 3  
Draft Shallow

## Utilities

Electricity Supplier: Cleco  
Natural Gas Supplier: City of Alexandria  
Water Supplier: City of Alexandria  
Sewer Supplier: City of Alexandria  
Telecommunications Supplier: AT&T  
Fiber-Optic Supplier: AT&T

## Incentives

Enterprise Zone: No  
Foreign Trade Zone: Yes  
GO Zone: No  
Renewal Community: No

## Comments

It is certified by Louisiana Economic Development and McCallum Sweeney in the Cleco Smartsite program.